



RC-5 Temperature Data Logger (Multi Use) User Manual

Download and Install Software

1. Visit www.elitechlog.com/software. Select and download the software.
 2. Double click to open the zip file. Follow the prompts to install it.
 3. When the installation is complete, open the software.
- If necessary, disable the firewall or close the antivirus software.*

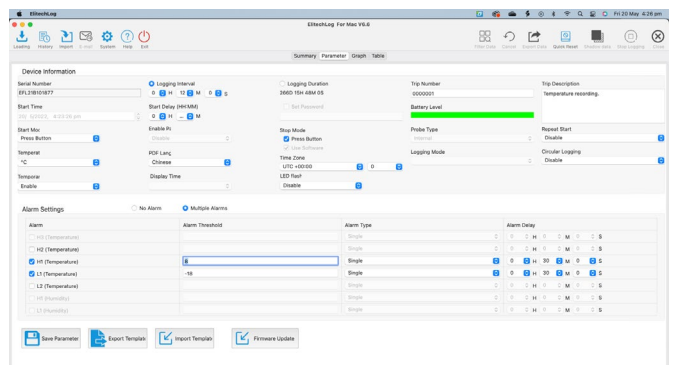
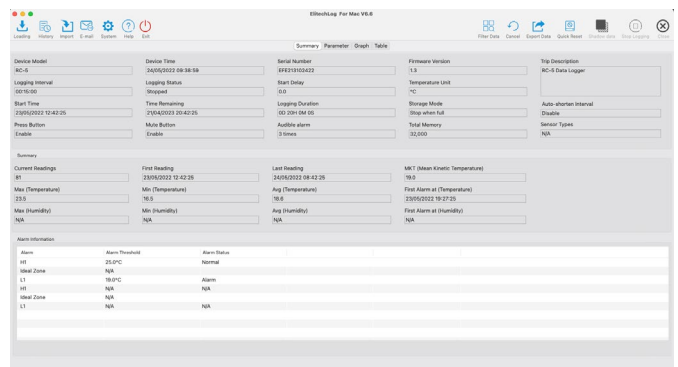
Configure the Logger

1. Remove the cover from the data logger and connect the logger to a computer USB port. The software will read the logger automatically. Once connected, it will connect to the "Summary" page which shows Device and Alarm information.
2. To adjust parameters for setup, click on the "Parameters" Tab. On this page, you can set up all required logging parameters.



- Logging interval period.
- Set a Start Delay time if required
- Enable or disable the start button (Press Button).
- Select Temperature Unit (C or F).
- Select both upper and lower temperature alarm threshold limits.
- Set an Audible alarm when a temperature breach occurs.
- Set Audible Alarm Interval.
- Enable/Disable Button Tone.

3. When complete click on 'Save Parameter.'
4. A dialog box will appear to confirm all logger data will be erased.
5. A "Parameters set successfully" message will appear.





Remove the logger from the computer.

Start Recording

1. Press and hold the button for 5 secs to start the logger until shows on the screen. The logger will start logging once the Start Delay period set has elapsed.
2. Replace the cover and place it where it is required for logging.

View logger information at any time

1. Press and release to shift between display interfaces to view information at any time.
2. Pressing the button will scroll through to show:
 - current temperature
 - number of readings
 - current time HH:MM
 - date MM:DD
 - maximum temperature recorded,
 - minimum temperature recorded
 - maximum temperature thresholds set.
 - minimum temperature thresholds set.

Stop Recording

1. Press and hold for 5 secs to stop the logger until shows in the logger screen. The logger has now stopped logging.

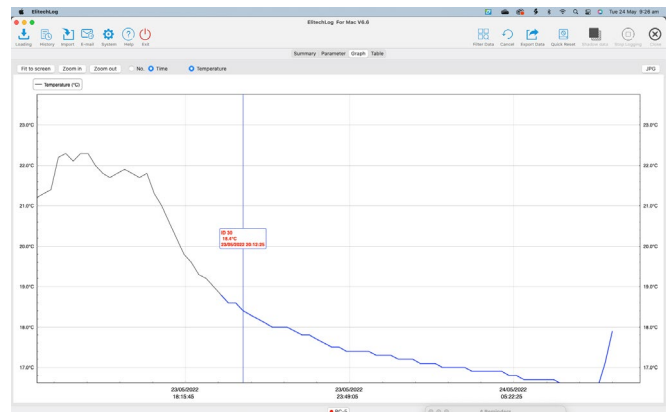
Download Data

1. Remove the lid from the data logger and plug it into a USB port on your PC.
2. Open the Elitech software and wait for the USB to be recognised.
3. The software will open on the summary page and display the device's information. This page will show the statistical information recorded on the logger.

This page provides:

- number of readings.
- the time of the first and last readings.
- mean kinetic temperature.
- maximum temperature.
- minimum temperature.
- average temperature.
- time of the first alarm (if any).

To view a complete breakdown of the data, select 'Graph' from the menu at the top of the screen. A graph will appear displaying all the measured readings.



Clicking on the graph displays the log number, recorded temperature and timestamp for each reading. Alternatively, you can view the data as a complete list by selecting the 'Table' tab

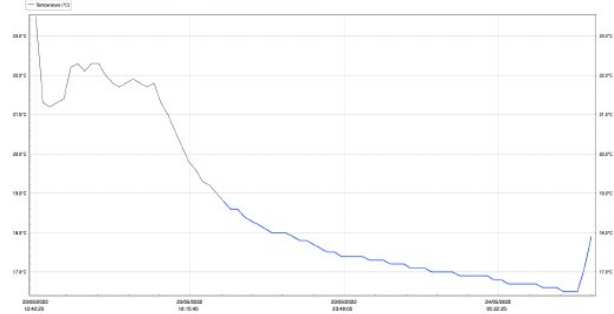
To export and save your collected temperature data, click on the 'Export data' icon at the top right of the page. You can export data as a PDF, Excel or ELT, file.



Data Report

File is created on: 24/05/2022 08:52:33

| Device Information | | | |
|--------------------------------|---------------------|-----------------------|---------------------|
| Device Model | RC-5 | Logging Interval: | 0H 15M 0S |
| Total Space | 32000 | Press Button | Enable |
| Start Time | 23/05/2022 12:42:25 | Temperature Unit | °C |
| Storage Mode | Stop when full | Audible alarm | 3 times |
| Mute Button | Enable | Auto-shorten Interval | Disable |
| Trip Description | | | |
| Serial Number | EFE213102422 | | |
| Trip Description: | RC-5 Data Logger | | |
| Mark Time | | | |
| N/A | | | |
| Alarm | | | |
| H1 | 25.0°C | | Normal |
| Ideal Zone | Unlimited | 0D 0H 0M 0S | |
| L1 | 19.0°C | | Alarm |
| Summary | | | |
| Max | 23.5°C | Log Start Time | 23/05/2022 12:42:25 |
| Min | 16.5°C | Last Reading | 24/05/2022 08:42:25 |
| Avg | 18.6°C | Logging Duration | 0D 20H 0M 0S |
| MKT (Mean Kinetic Temperature) | 19.0°C | Total Points | 81 |
| Initial Alarm (Temperature) | 23/05/2022 19:27:25 | | |



From 23/05/2022 12:42:25 to 24/05/2022 08:42:25

File is created on: 24/05/2022 08:52:33

| Time | °C | Time | °C | Time | °C | Time | °C | Time | °C |
|-----------------|------|----------|------|------|----|------|----|------|----|
| 23/05/2022 23:5 | | 06:27:25 | 16.7 | | | | | | |
| 12:42:25 | 21.3 | 06:42:25 | 16.7 | | | | | | |
| 13:12:25 | 21.2 | 06:57:25 | 16.6 | | | | | | |
| 13:27:25 | 21.3 | 07:12:25 | 16.6 | | | | | | |
| 13:42:25 | 21.4 | 07:27:25 | 16.6 | | | | | | |
| 13:57:25 | 22.2 | 07:42:25 | 16.5 | | | | | | |
| 14:12:25 | 22.3 | 07:57:25 | 16.5 | | | | | | |
| 14:27:25 | 22.1 | 08:12:25 | 16.5 | | | | | | |
| 14:42:25 | 22.3 | 08:27:25 | 17.1 | | | | | | |
| 14:57:25 | 22.3 | 08:42:25 | 17.9 | | | | | | |
| 15:12:25 | 22.2 | | | | | | | | |
| 15:27:25 | 21.8 | | | | | | | | |
| 15:42:25 | 21.7 | | | | | | | | |
| 15:57:25 | 21.8 | | | | | | | | |
| 16:12:25 | 21.9 | | | | | | | | |
| 16:27:25 | 21.8 | | | | | | | | |
| 16:42:25 | 21.7 | | | | | | | | |
| 16:57:25 | 21.8 | | | | | | | | |
| 17:12:25 | 21.3 | | | | | | | | |
| 17:27:25 | 21.0 | | | | | | | | |
| 17:42:25 | 20.6 | | | | | | | | |
| 17:57:25 | 20.2 | | | | | | | | |
| 18:12:25 | 19.8 | | | | | | | | |
| 18:27:25 | 19.6 | | | | | | | | |
| 18:42:25 | 19.3 | | | | | | | | |
| 18:57:25 | 19.2 | | | | | | | | |
| 19:12:25 | 19.0 | | | | | | | | |
| 19:27:25 | 18.6 | | | | | | | | |
| 19:42:25 | 18.6 | | | | | | | | |
| 19:57:25 | 18.6 | | | | | | | | |
| 20:12:25 | 18.4 | | | | | | | | |
| 20:27:25 | 18.3 | | | | | | | | |
| 20:42:25 | 18.2 | | | | | | | | |
| 20:57:25 | 18.1 | | | | | | | | |
| 21:12:25 | 18.0 | | | | | | | | |
| 21:27:25 | 18.0 | | | | | | | | |
| 21:42:25 | 18.0 | | | | | | | | |
| 21:57:25 | 17.9 | | | | | | | | |
| 22:12:25 | 17.8 | | | | | | | | |
| 22:27:25 | 17.6 | | | | | | | | |
| 22:42:25 | 17.7 | | | | | | | | |
| 22:57:25 | 17.6 | | | | | | | | |
| 23:12:25 | 17.5 | | | | | | | | |
| 23:27:25 | 17.5 | | | | | | | | |
| 23:42:25 | 17.4 | | | | | | | | |
| 23:57:25 | 17.4 | | | | | | | | |
| 24/05/2022 17:4 | | | | | | | | | |
| 00:27:25 | 17.4 | | | | | | | | |
| 00:42:25 | 17.3 | | | | | | | | |
| 00:57:25 | 17.3 | | | | | | | | |
| 01:12:25 | 17.3 | | | | | | | | |
| 01:27:25 | 17.2 | | | | | | | | |
| 01:42:25 | 17.2 | | | | | | | | |
| 01:57:25 | 17.2 | | | | | | | | |
| 02:12:25 | 17.1 | | | | | | | | |
| 02:27:25 | 17.1 | | | | | | | | |
| 02:42:25 | 17.1 | | | | | | | | |
| 02:57:25 | 17.0 | | | | | | | | |
| 03:12:25 | 17.0 | | | | | | | | |
| 03:27:25 | 17.0 | | | | | | | | |
| 03:42:25 | 17.0 | | | | | | | | |
| 03:57:25 | 16.9 | | | | | | | | |
| 04:12:25 | 16.9 | | | | | | | | |
| 04:27:25 | 16.9 | | | | | | | | |
| 04:42:25 | 16.9 | | | | | | | | |
| 04:57:25 | 16.9 | | | | | | | | |
| 05:12:25 | 16.8 | | | | | | | | |
| 05:27:25 | 16.8 | | | | | | | | |
| 05:42:25 | 16.7 | | | | | | | | |
| 05:57:25 | 16.7 | | | | | | | | |
| 06:12:25 | 16.7 | | | | | | | | |