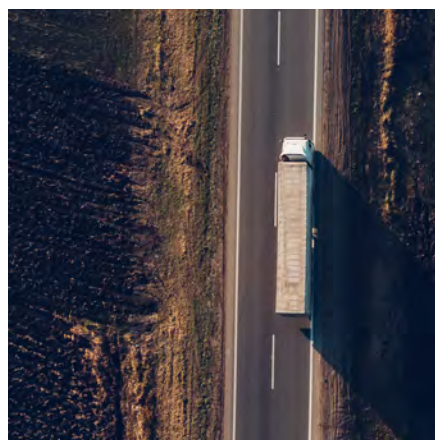
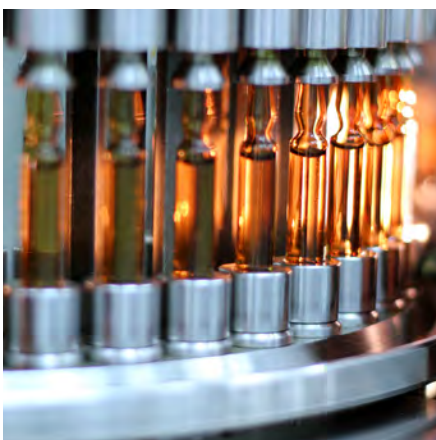




# WarmMark QR Temperature Indicators



**WarmMark QR** is a single-use, battery free, connected time-temperature sensor enabled by smart phones to seamlessly determine if a condition (i.e. temperature) excursion has occurred and reports this condition along with time, date, location, and serial number to the SpotSee cloud. SpotSee's cloud platform displays individual sensor information and high-level condition insights to aid shipping and quality improvements. WarmMark goes from white to pink/red when unacceptably high temperatures have been experienced.

## Improve Decision Making

Remotely identify, analyse, and improve problem areas or lanes in the cold chain.

## How It Works:

- Arm sensor and apply to product
- WarmMark senses environmental temperature that your shipment is subject to
- Recipient scans QR code with smart phone to access condition information
- Real time scan data is sent to the SpotSee cloud for shipper review

## Visualise Cold Chain Performance

Cloud-based temperature excursion monitoring with real time insights of sensitive asset condition down to the patient level. When your patient or customer knows, so do you.

## Compliance & Data Security

24/7 web-based cloud access to shipment temperature condition, built to comply with 21CFR Part 11 record keeping and user access requirements.

## Adoption Made Easy

No app required. Designed for use by all cold chain personnel and more - from manufacturer all the way to the patient.

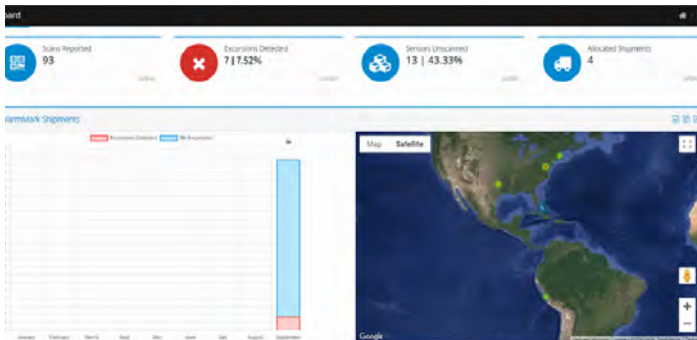




### SpotSee Cloud

A dedicated cloud platform designed for compatibility with low-cost, single-use temperature sensors utilised in life science cold chain applications. Track the temperature end-state of critical and high-volume assets at each step in the cold chain.

#### Dashboard View



#### Individual Sensor View

Shipment ID	Shipment Location	Shipment Status	Shipment Date	Shipment Time	Shipment Type	Shipment Category
WM000001	USA - NY	OK	2024-01-21	10:00 AM	Standard	Standard
WM000002	USA - NY	Excursion	2024-01-21	10:00 AM	Standard	Standard
WM000003	USA - NY	OK	2024-01-21	10:00 AM	Standard	Standard
WM000004	USA - NY	Excursion	2024-01-21	10:00 AM	Standard	Standard
WM000005	USA - NY	OK	2024-01-21	10:00 AM	Standard	Standard

### A to B Visibility

The data you need, when you need it. SpotSee Cloud and connected single-use temperature sensors provide shipment condition status from the end user (even patient). Ascertain the time, date, location and condition of every sensor you deploy when scanned by a smart phone.

### Simplify Data Collection

Gathering information for better decision making has never been easier. Blind spots in the cold chain exist in the last mile but now WarmMark QR fills the gap and provides visibility where there previously was none.

### Package Level Monitoring

Criticality doesn't only apply to bulk shipments. WarmMark QR can be used at the carton or item level since it is a single-use, low-cost temperature sensor that doesn't require a return program and can remain on the item down to the patient for the ultimate peace of mind.

### Available WarmMark QR Temperatures

*(temperatures in bold below are stock items, remaining temperatures are make-to-order)*

Part Number	Temperature	Run-Out Time
• WM 0/32 - SQ	0°C / 32°F	48 hours
• WM 5/41 - SQ	5°C / 41°F	8 hours
• <b>WM 8/46 - 8Q</b>	<b>8°C / 46°F</b>	<b>8 hours</b>
• <b>WM 8/46 - 12Q</b>	<b>8°C / 46°F</b>	<b>12 hours</b>
• <b>WM 8/46 - SQ</b>	<b>8°C / 46°F</b>	<b>48 hours</b>
• WM 10/55 - SQ	10°C / 50°F	48 hours
• WM -18/0- SQ	18°C / 0°F	12 hours
• <b>WM 25/77 - SQ</b>	<b>25°C / 77°F</b>	<b>8 hours</b>
• WM 26/79 - SQ	26°C / 79°F	48 hours
• WM 30/86 - SQ	30°C / 86°F	8 hours
• WM 37/99 - SQ	37°C / 99°F	8 hours